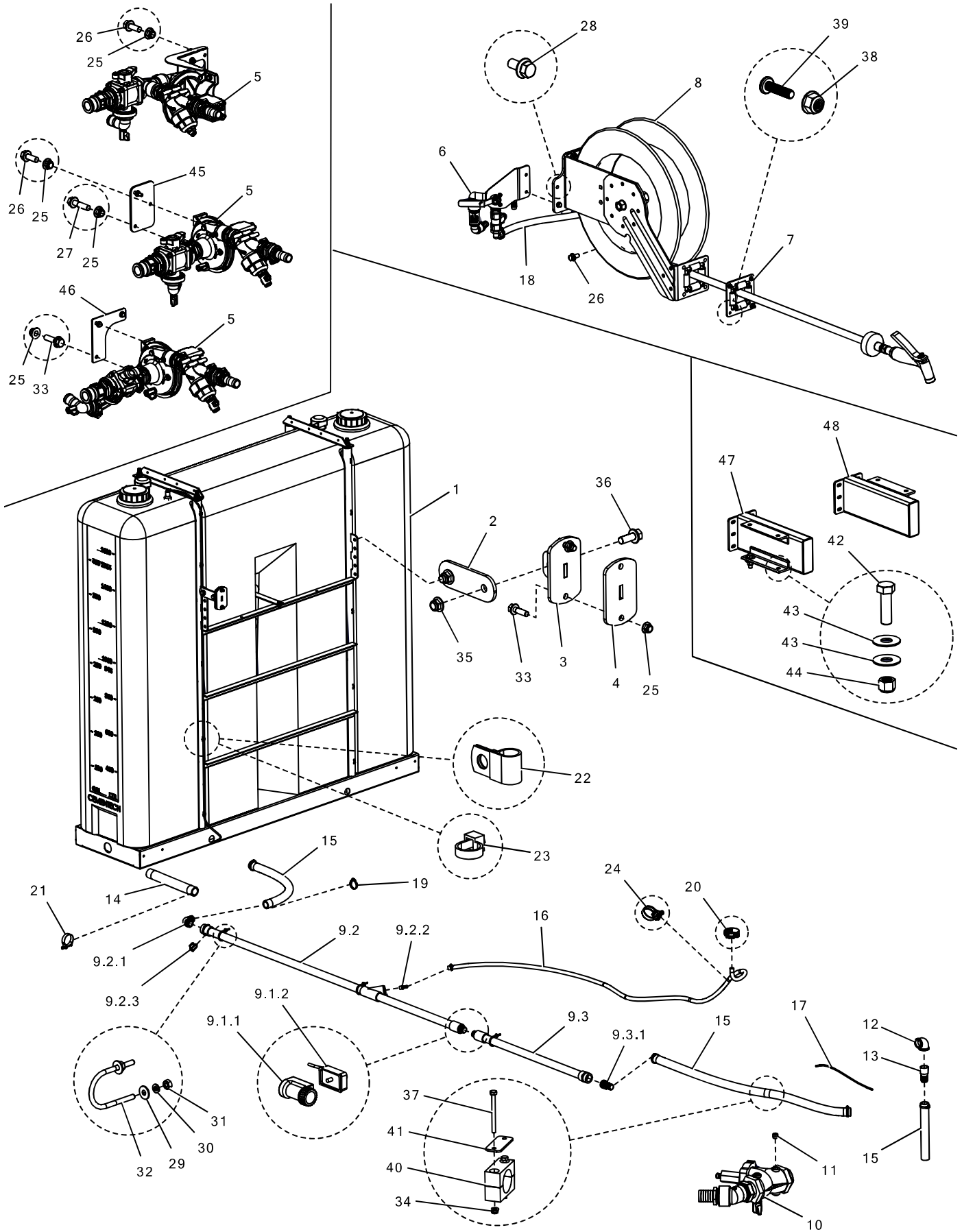


5.1 – C60 – WATER SYSTEM



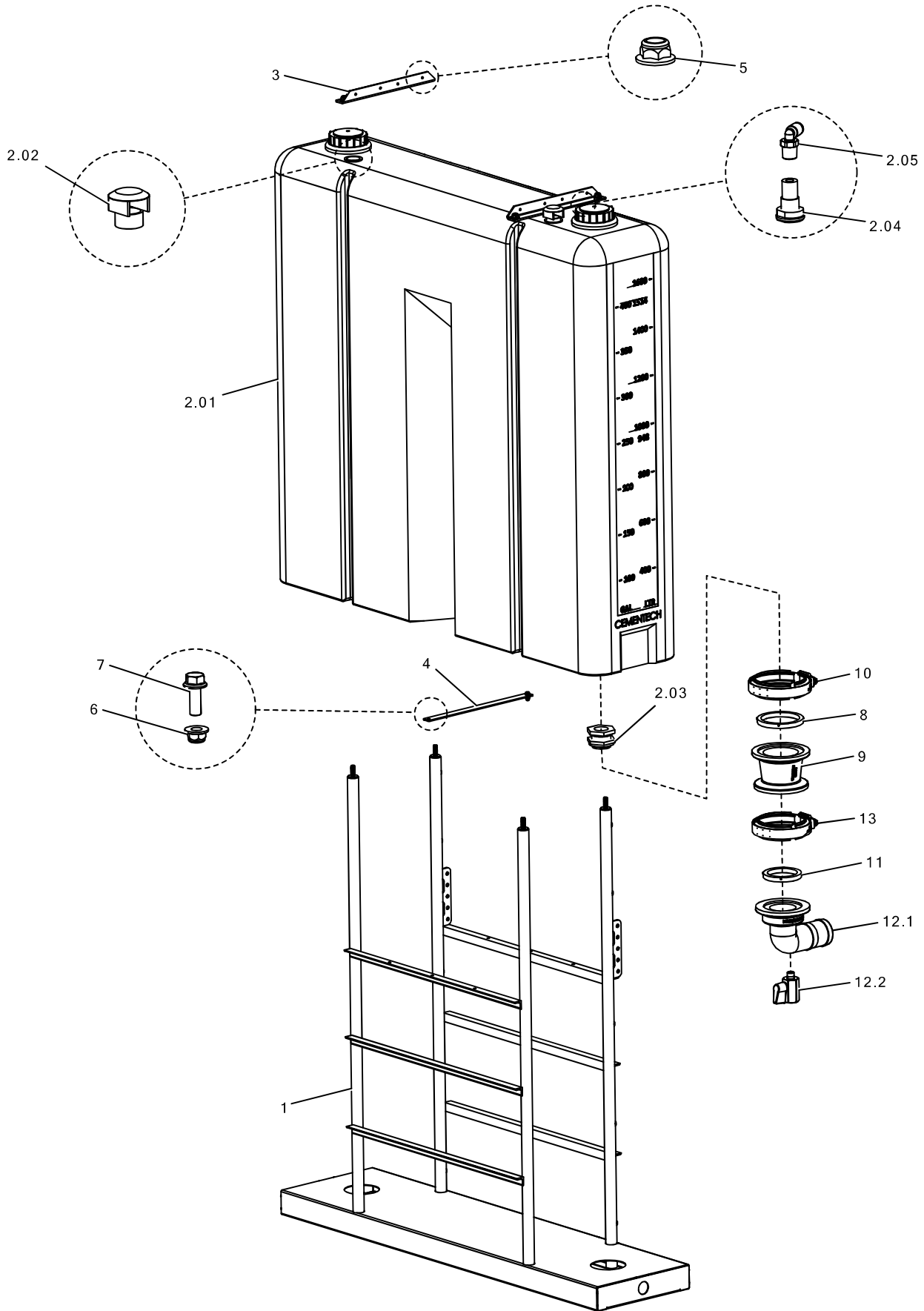
5.1 – C60 – WATER SYSTEM

Item	Description	Part Number	Quantity	
			C60	C60E
1	WATER TANK & BASE ASSY			
	WATER TANK & BASE ASSY, STD	2542-166-00	1	1
	WATER TANK & BASE ASSY, INSUL	2542-185-00	1	1
2	BRACE	2542-064-03	2	2
3	BRACE MOUNT	2581-235-00	2	2
4	BRACE PAD	2581-018-01	2	2
5	WATER PUMP ASSY			
	WATER PUMP ASSY, ON BIN SUPPORT	2581-415-00	1	1
	WATER PUMP ASSY, ON STD TANK	2542-439-01	1	1
	WATER PUMP ASSY, ON INSUL TANK	2542-451-01	1	1
6	VALVE ASSY	2542-437-01	1	1
7	GUIDE	5401-095-000	1	1
8	HOSE REEL ASSY	2542-403-01	1	1
9	WATER PIPE ASSY			
	WATER PIPE ASSY	2542-455-00	1	-
	WATER PIPE ASSY	2542-453-00	-	1
9.1	FLOWMETER ASSY	2439-325-04	1	1
9.1.1	TURBINE	5508-700-021	1	1
9.1.2	OUTPUT MODULE	2439-325-03	1	1
9.2	WATER PIPE, FRONT	2542-495-00	1	1
9.2.1	BARB	5401-722-000	1	1
9.2.2	BARB	5401-082	1	1
9.2.3	DRAIN VALVE	5456-157-000	1	1
9.3	WATER PIPE, BACK			
	WATER PIPE, BACK	2542-496-00	1	-
	WATER PIPE, BACK	2542-497-00	-	1
9.3.1	BARB	5401-422-000	1	1

Item	Description	Part Number	Quantity	
			C60	C60E
10	VALVE ASSY	2542-406-01	1	1
11	PLUG	5005-111-001	2	2
12	ELBOW	5001-160.10	1	1
13	NIPPLE	5070-160	1	1
14	HOSE, 1-1/2"	5400-242	1.8'	1.8'
15	HOSE, 1-1/4"	5400-201	7.6'	7.6'
16	HOSE, 1/2"	5400-081	10.5'	10.5'
17	TUBING, 1/4"	5075-204	12.5'	12.5'
18	TUBING, 1/2"	5075-808	1.8'	1.8'
19	CLAMP, 1-1/4"	5370-524	5	5
20	CLAMP, 1/2"	5370-510	4	4
21	CLAMP, 1-1/2"	5370-530-002	2	2
22	CLAMP	5370-740	10	10
23	WIRE TIE	5532-108	5	5
24	WIRE TIE, TREE	5532-205-000	2	2
25	FLANGE LOCK NUT	5307-216-000	11	11
26	FLANGE BOLT	5309-208-000	7	7
27	FLANGE BOLT	5309-212-000	1	1
28	FLANGE BOLT	5309-005-000	2	2
29	WASHER	5310-000	8	10
30	LOCK WASHER	5305-000	8	10
31	NUT	5300-020	8	10
32	UBOLT	5381-008	4	5
33	FLANGE BOLT	5309-210-000	7	7
34	FLANGE LOCK NUT	5307-020-000	2	2
35	FLANGE LOCK NUT	5307-413-000	4	4
36	FLANGE BOLT	5309-410-000	4	4
37	BOLT	5315-024	2	2
38	FLANGE LOCK NUT	5307-032-100	2	2
39	SCREW	5335-320-002	2	2
40	CLAMP	5370-406-004	1	1
41	COVER PLATE	5370-406-002	1	1
*42	BOLT	5315-720	4	4
*43	WASHER	5310-700	8	8
*44	LOCK NUT	5302-710	4	4
45	BRACKET	2150-269-00	1	1
46	BRACKET	2542-065-09	1	1
47	8" RISER, LH SIDE			
	8" RISER, LH SIDE, STD TANK	1560-252-02	1	1
	8" RISER, LH SIDE, INSUL TANK	2542-204-03	1	1
48	8" RISER, RH SIDE			
	8" RISER, RH SIDE, STD TANK	1560-252-02	1	1
	8" RISER, RH SIDE, INSUL TANK	2542-205-03	1	1

* tank base to subframe hardware. 8 bolts are used to mount tanks with 8" risers

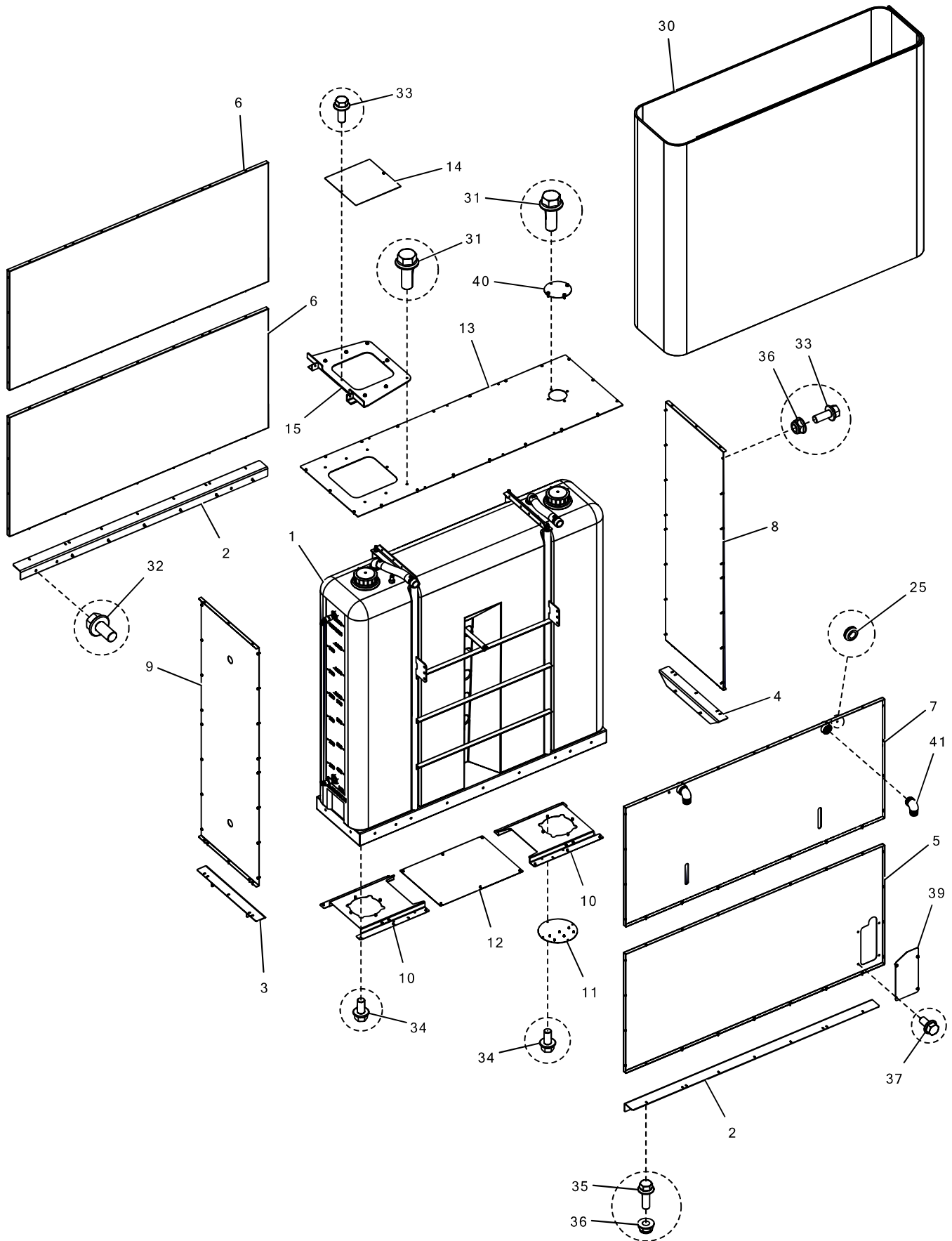
5.1.1 – C60 – STANDARD WATER TANK



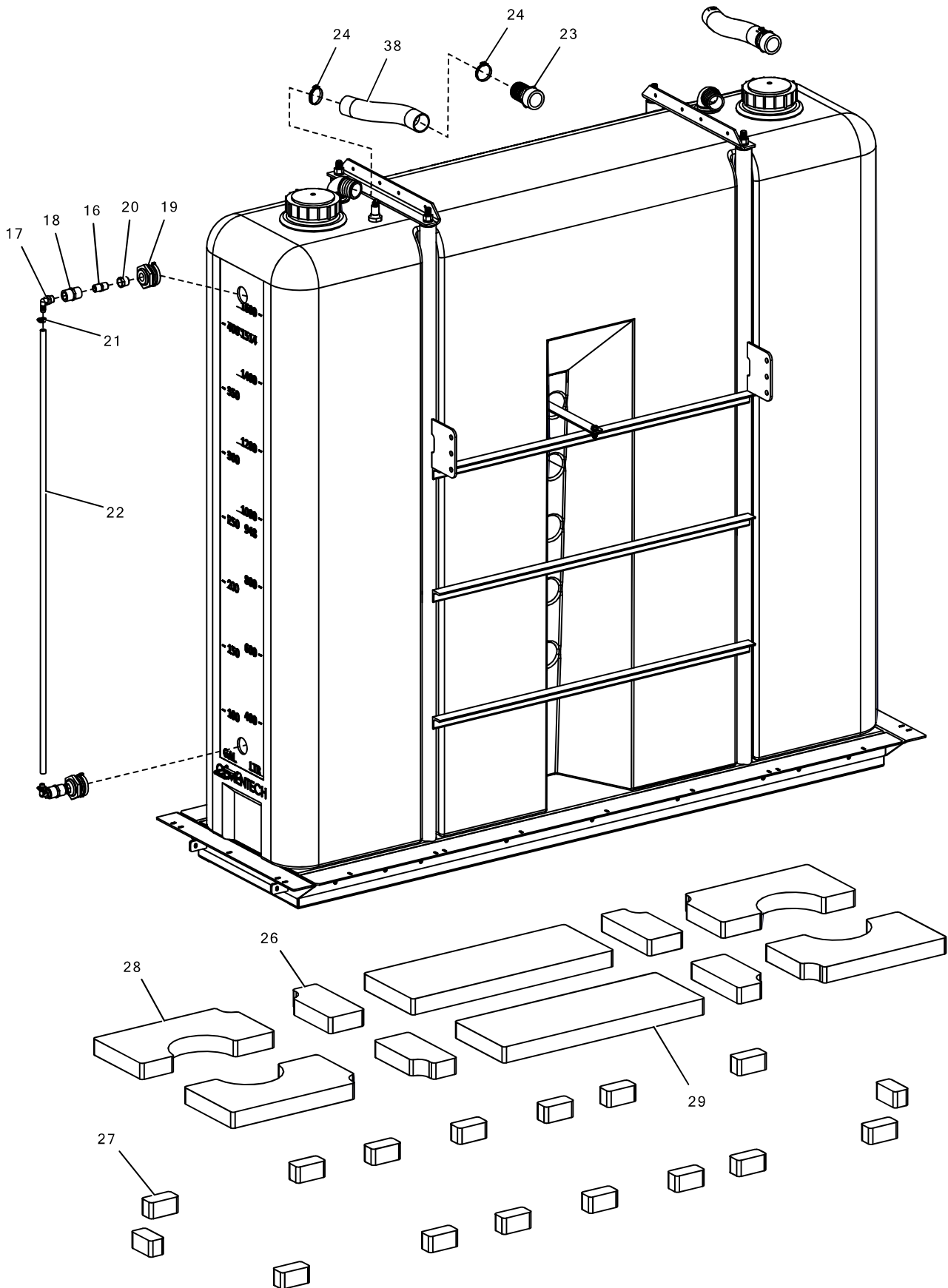
5.1.1 – C60 – STANDARD WATER TANK

Item	Description	Part Number	Quantity	
			C60	C60E
1	WATER TANK BASE	2542-298-00	1	1
2	WATER TANK ASSY	2581-404-00	1	1
2.01	WATER TANK	5457-500	1	1
2.01.1	CAP	5457-904	2	2
2.02	VENT	5457-920	2	2
2.03	BULKHEAD	5457-947-000	1	1
2.04	BULKHEAD	5457-940	1	1
2.05	PUSHLOCK	5077-523	1	1
3	RETAINER	1560-003	2	2
4	CROSS SUPPORT	1560-010-00	1	1
5	FLANGE LOCK NUT	5307-611-000	4	4
6	FLANGE LOCK NUT	5307-216-000	2	2
7	FLANGE BOLT	5309-208-000	2	2
8	GASKET	5016-301-003	1	1
9	COUPLING	5016-000-000	1	1
10	CLAMP	5016-300-003	1	1
11	GASKET	5016-301-002	1	1
12	BARB ASSY	2581-416-00	1	1
12.1	BARB	5016-202-001	1	1
12.2	DRAIN VALVE	5456-157-000	1	1
13	CLAMP	5016-300-002	1	1

5.1.2 – C60 – INSULATED WATER TANK



5.1.2 – C60 – INSULATED WATER TANK

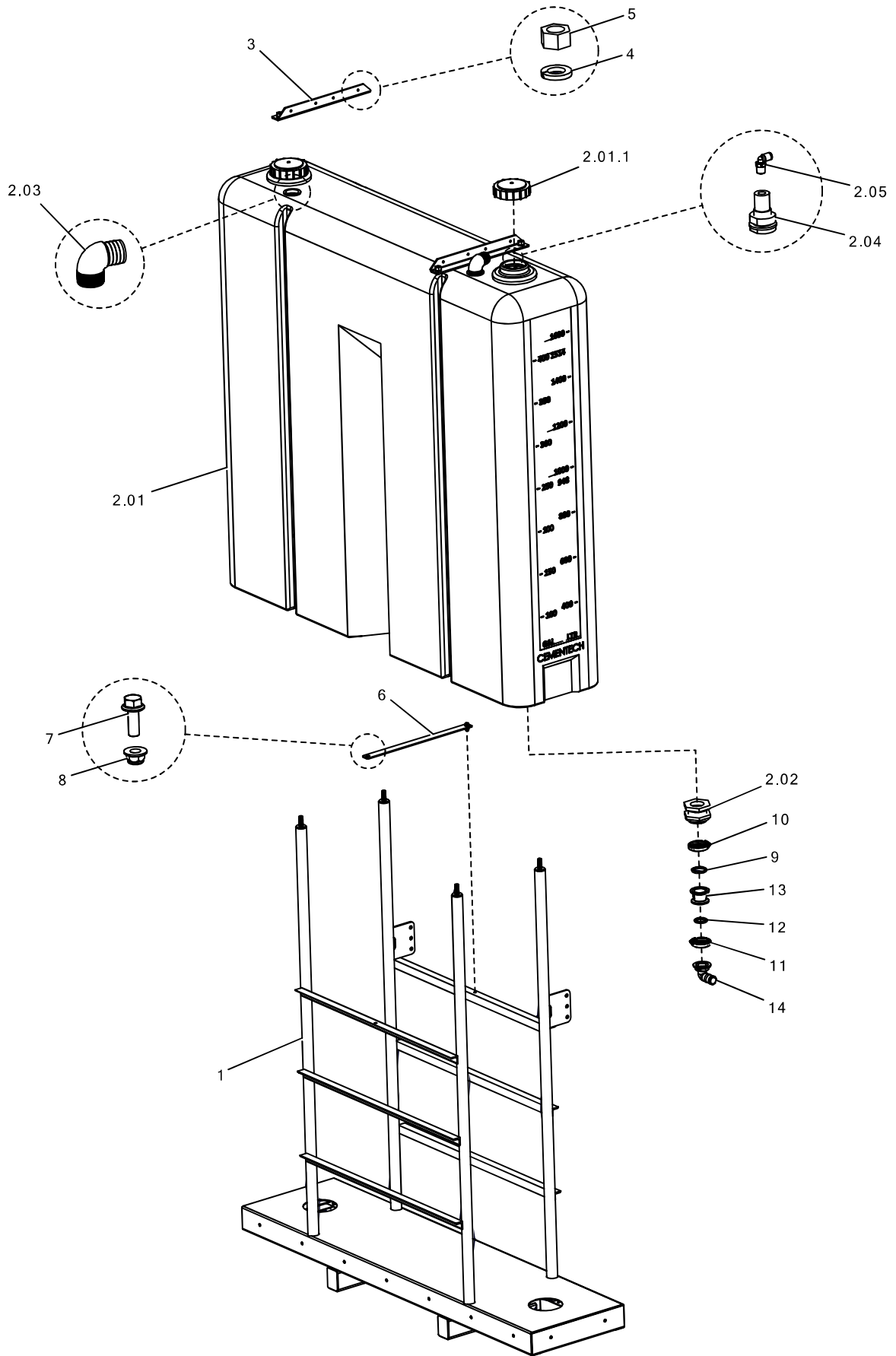


5.1.2 – C60 – INSULATED WATER TANK

Item	Description	Part Number	Quantity	
			C60	C60E
1	WATER TANK & BASE ASSY	2542-186-00	1	1
2	SKIN SUPPORT, LONG	1560-051-01	2	2
3	SKIN SUPPORT, LH SIDE	2542-266-01	1	1
4	SKIN SUPPORT, RH SIDE	2542-015-06	1	1
5	SKIN, BACK LOWER	2542-279-02	1	1
6	SKIN, FRONT	2542-018-06	2	2
7	SKIN, BACK UPPER	2542-271-01	1	1
8	SKIN, RH SIDE	2542-014-06	1	1
9	SKIN, LH SIDE	2542-098-05	1	1
10	SKIN, BOTTOM	2542-449-01	2	2
11	MOUNT	2542-452-01	1	1
12	SKIN, BOTTOM, CENTER	2542-019-06	1	1
13	SKIN, TOP	2542-298-02	1	1
14	ACCESS DOOR	2542-020-06	1	1
15	LADDER MOUNT, TOP	2542-268-01	1	1
16	NIPPLE	5053-000.30	2	2
17	BARB	5401-582	2	2
18	COUPLING	5007-130.30	2	2
19	BULKHEAD	5457-912A	2	2
20	REDUCER	5010-142.30	2	2
21	CLAMP	5370-506	2	2
22	TUBING	5075-808	5.6'	5.6'
23	BARB	5401-432	2	2
24	CLAMP	5370-532	4	4
25	GROMMET	5532-604-002	2	2
26	FOAM INSUL, FILL	2542-038-10	4	4
27	FOAM INSUL, CUBE	1560-036-02	16	16
28	FOAM INSUL, SIDE	2542-037-10	4	4
29	FOAM INSUL, CENTER	1560-035-02	2	2
30	INSUL BLANKET	GPCS10344	2	2
31	FLANGE BOLT	5309-208-000	11	11
32	FLANGE BOLT	5309-206-000	20	20
33	FLANGE BOLT	5309-005-000	68	68
34	FLANGE BOLT	5309-004-000	22	22
35	FLANGE BOLT	5309-006-000	24	24
36	FLANGE LOCK NUT	5307-020-000	90	90
37	FLANGE BOLT	5309-105-000	4	4
38	HOSE	5400-321	2.5'	2.5'
39	COVER	2542-004-09	1	1
40	COVER	2542-060-09	1	1
41	BARB	5401-832	2	2

5.1.2 – C60 – INSULATED WATER TANK

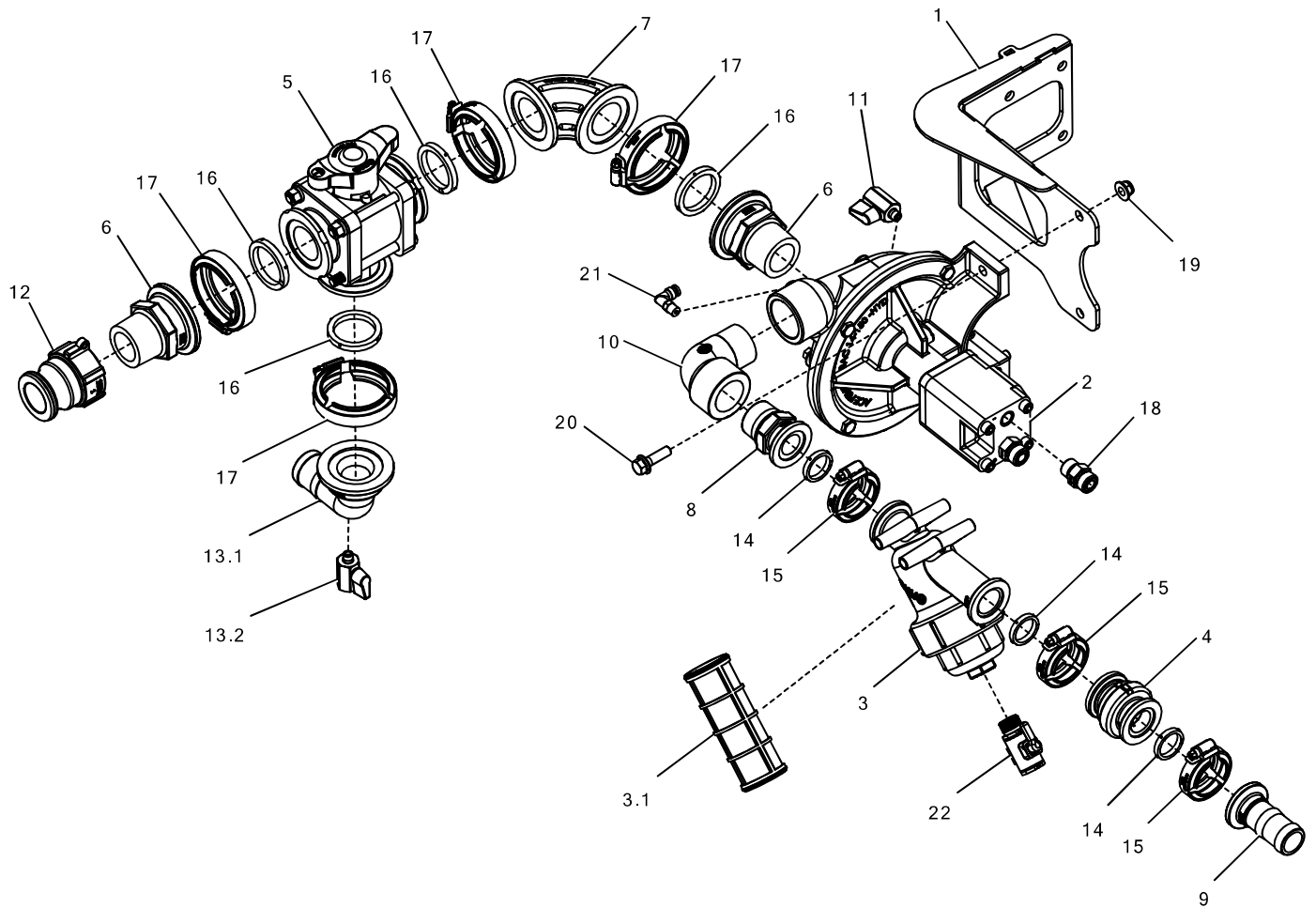
5.1.2.1 – C60 – INSULATED WATER TANK AND BASE



5.1.2.1 – C60 – INSULATED WATER TANK AND BASE

Item	Description	Part Number	Quantity	
			C60	C60E
1	WATER TANK BASE	2542-206-03	1	1
2	WATER TANK ASSY	2581-417-00	1	1
2.01	WATER TANK	5457-500	1	1
2.01.1	CAP	5457-904	2	2
2.02	BULKHEAD	5457-947-000	1	1
2.03	BARB	5401-832	2	2
2.04	BULKHEAD	5457-940	1	1
2.05	PUSHLOCK	5077-523	1	1
3	RETAINER	1560-003	2	2
4	LOCK WASHER	5305-600	4	4
5	NUT	5300-611	4	4
6	CROSS SUPPORT	1560-010-00	1	1
7	FLANGE BOLT	5309-208-000	2	2
8	FLANGE LOCK NUT	5307-216-000	2	2
9	GASKET	5016-301-003	1	1
10	CLAMP	5016-300-003	1	1
11	CLAMP	5016-300-002	1	1
12	GASKET	5016-301-002	1	1
13	COUPLING	5016-000-000	1	1
14	BARB	5016-202-001	1	1

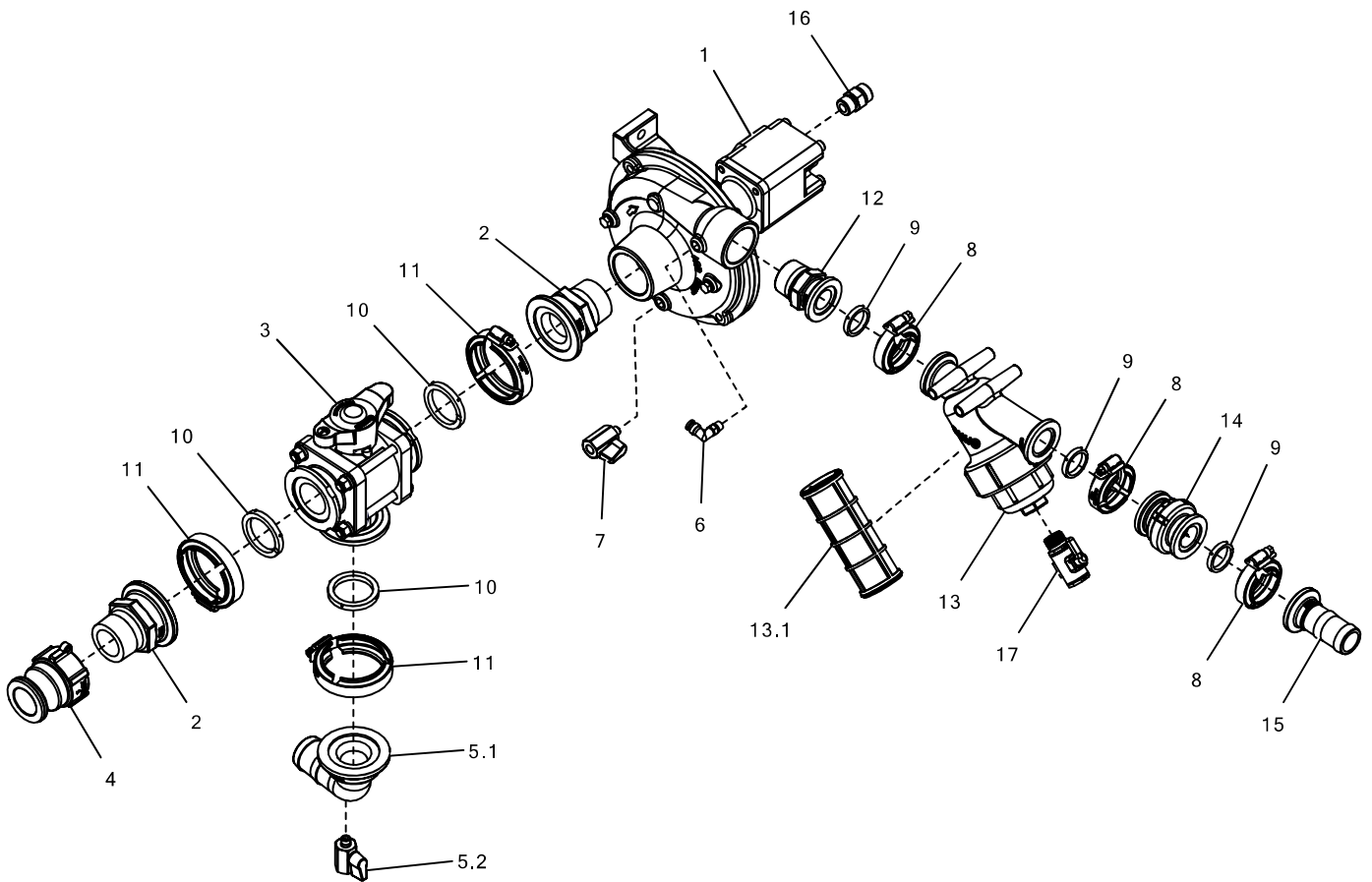
5.1.3 – C60 – WATER PUMP MOUNTED ON BIN SUPPORT



5.1.3 – C60 – WATER PUMP MOUNTED ON BIN SUPPORT

Item	Description	Part Number	Quantity	
			C60	C60E
1	BRACKET	2581-246-00	1	1
2	PUMP	5455-007-100	1	1
3	STRAINER ASSY	5451-128-000	1	1
3.1	STRAINER	5451-128-001	1	1
4	CHECK VALVE	5456-228-000	1	1
5	VALVE	5456-153-000	1	1
6	ADAPTER	5016-100-001	2	2
7	ELBOW	5016-400-000	1	1
8	ADAPTER	5016-100-000	1	1
9	BARB	5016-200-000	1	1
10	ELBOW	5003-160-002	1	1
11	DRAIN VALVE	5456-157-000	1	1
12	ADAPTER	5401-098-000	1	1
13	BARB ASSY	2581-416-00	1	1
13.1	BARB	5016-202-001	1	1
13.2	DRAIN VALVE	5456-157-000	1	1
14	GASKET	5016-301-001	3	3
15	CLAMP	5016-300-001	3	3
16	GASKET	5016-301-002	4	4
17	CLAMP	5016-300-002	4	4
18	CONNECTOR	5223-065-000	2	2
19	FLANGE LOCK NUT	5307-216-000	2	2
20	FLANGE BOLT	5309-210-000	2	2
21	PUSHLOCK	5077-522	1	1
22	DRAIN VALVE	5456-101-004	1	1

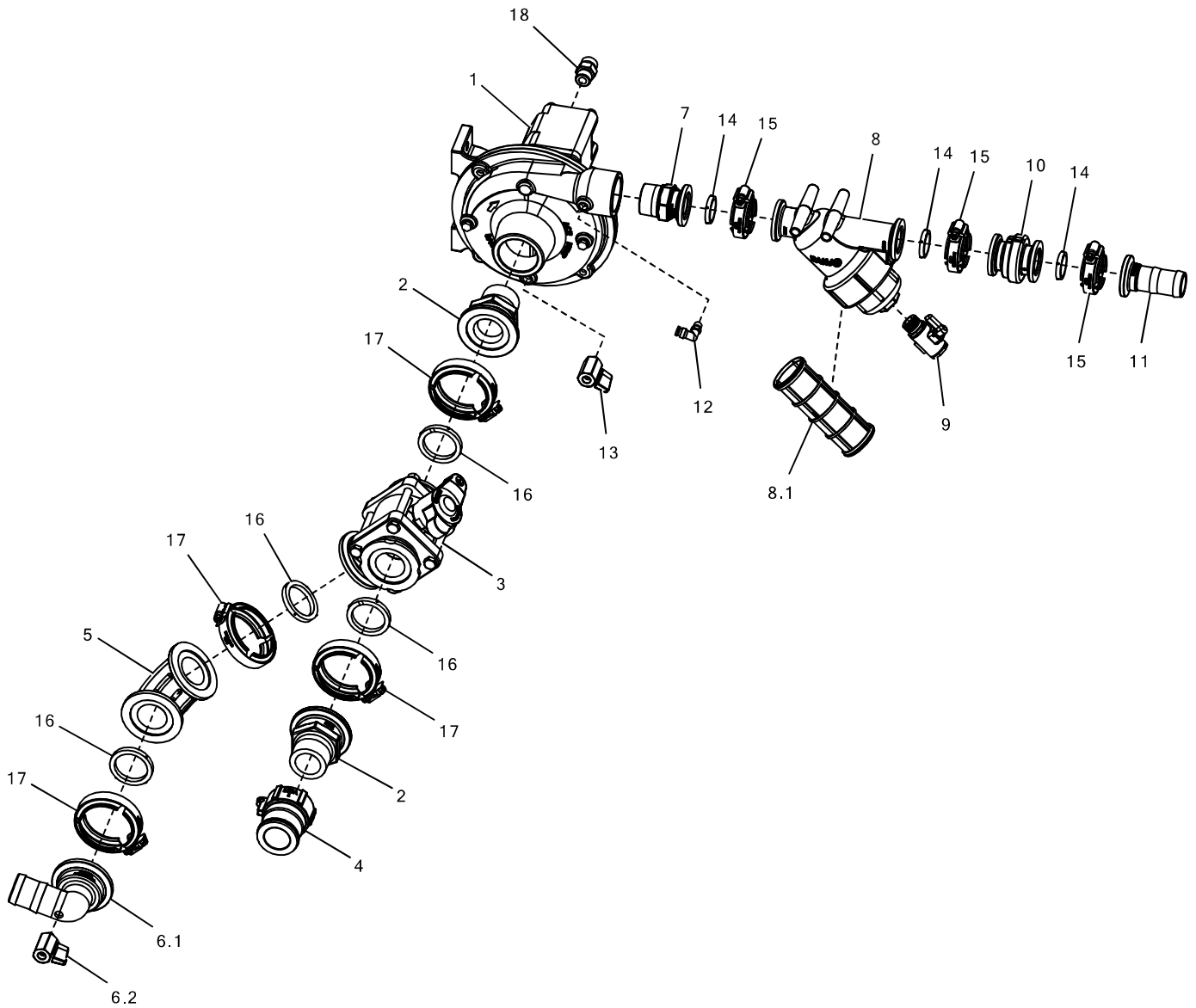
5.1.4 – C60 – WATER PUMP MOUNTED ON STANDARD WATER TANK



5.1.4 – C60 – WATER PUMP MOUNTED ON STANDARD WATER TANK

Item	Description	Part Number	Quantity	
			C60	C60E
1	PUMP	5455-007-100	1	1
2	ADAPTER	5016-100-001	2	2
3	VALVE	5456-153-000	1	1
4	ADAPTER	5401-098-000	1	1
5	BARB ASSY	2581-416-00	1	1
5.1	BARB	5016-202-001	1	1
5.2	DRAIN VALVE	5456-157-000	1	1
6	PUSHLOCK	5077-522	1	1
7	DRAIN VALVE	5456-157-000	1	1
8	CLAMP	5016-300-001	3	3
9	GASKET	5016-301-001	3	3
10	GASKET	5016-301-002	3	3
11	CLAMP	5016-300-002	3	3
12	ADAPTER	5016-100-000	1	1
13	STRAINER ASSY	5451-128-000	1	1
13.1	STRAINER	5451-128-001	1	1
14	CHECK VALVE	5456-228-000	1	1
15	BARB	5016-200-000	1	1
16	CONNECTOR	5223-065-000	2	2
17	DRAIN VALVE	5456-101-004	1	1

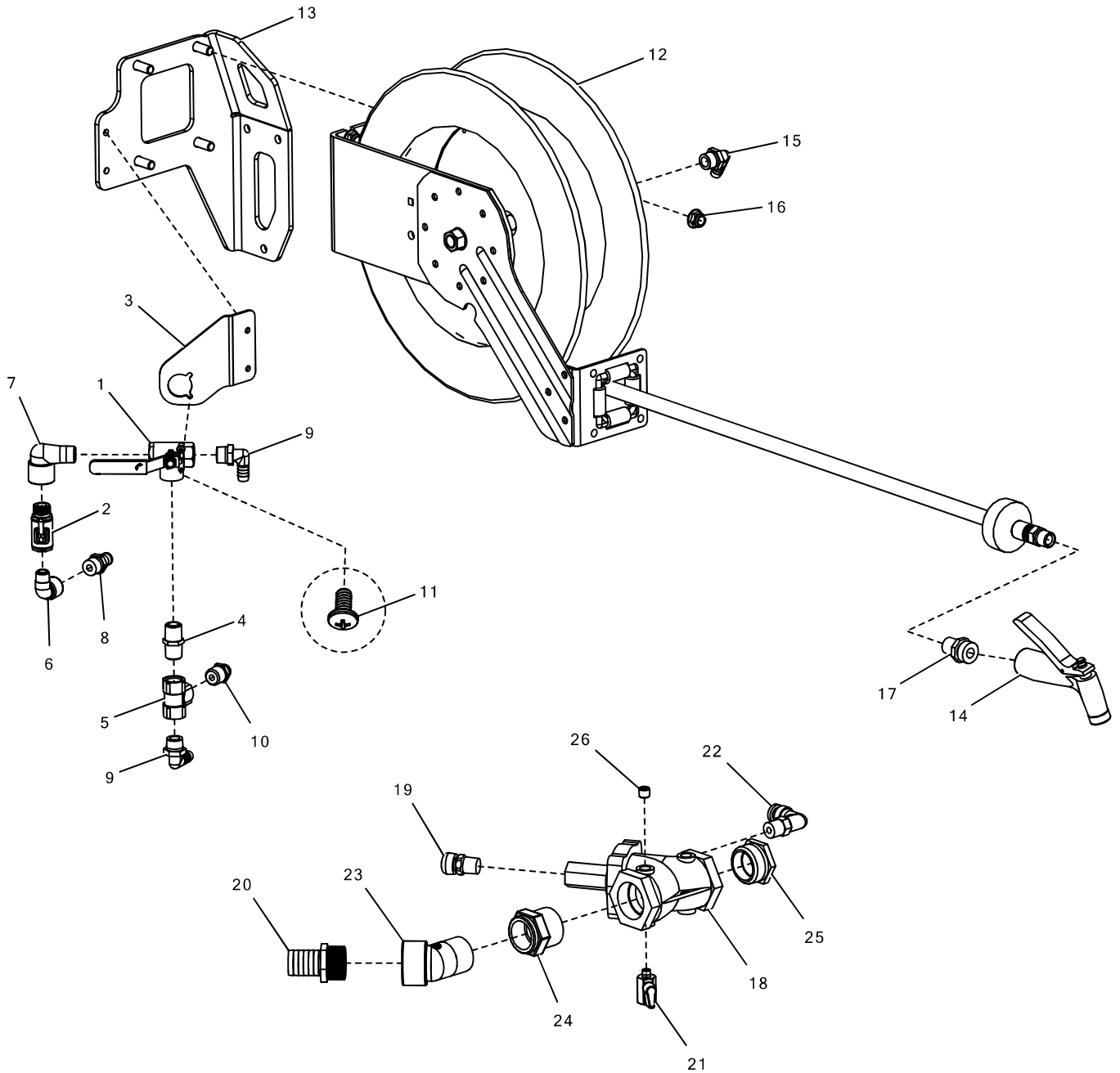
5.1.5 – C60 – WATER PUMP MOUNTED ON INSULATED WATER TANK



5.1.5 – C60 – WATER PUMP MOUNTED ON INSULATED WATER TANK

Item	Description	Part Number	Quantity	
			C60	C60E
1	PUMP	5455-007-100	1	1
2	ADAPTER	5016-100-001	2	2
3	VALVE	5456-153-000	1	1
4	ADAPTER	5401-098-000	1	1
5	ELBOW	5016-400-000	1	1
6	BARB ASSY	2581-416-00	1	1
6.1	BARB	5016-202-001	1	1
6.2	DRAIN VALVE	5456-157-000	1	1
7	ADAPTER	5016-100-000	1	1
8	STRAINER ASSY	5451-128-000	1	1
8.1	STRAINER	5451-128-001	1	1
9	DRAIN VALVE	5456-101-004	1	1
10	CHECK VALVE	5456-228-000	1	1
11	BARB	5016-200-000	1	1
12	PUSHLOCK	5077-522	1	1
13	DRAIN VALVE	5456-157-000	1	1
14	GASKET	5016-301-001	3	3
15	CLAMP	5016-300-001	3	3
16	GASKET	5016-301-002	4	4
17	CLAMP	5016-300-002	4	4
18	CONNECTOR	5223-065-000	2	2

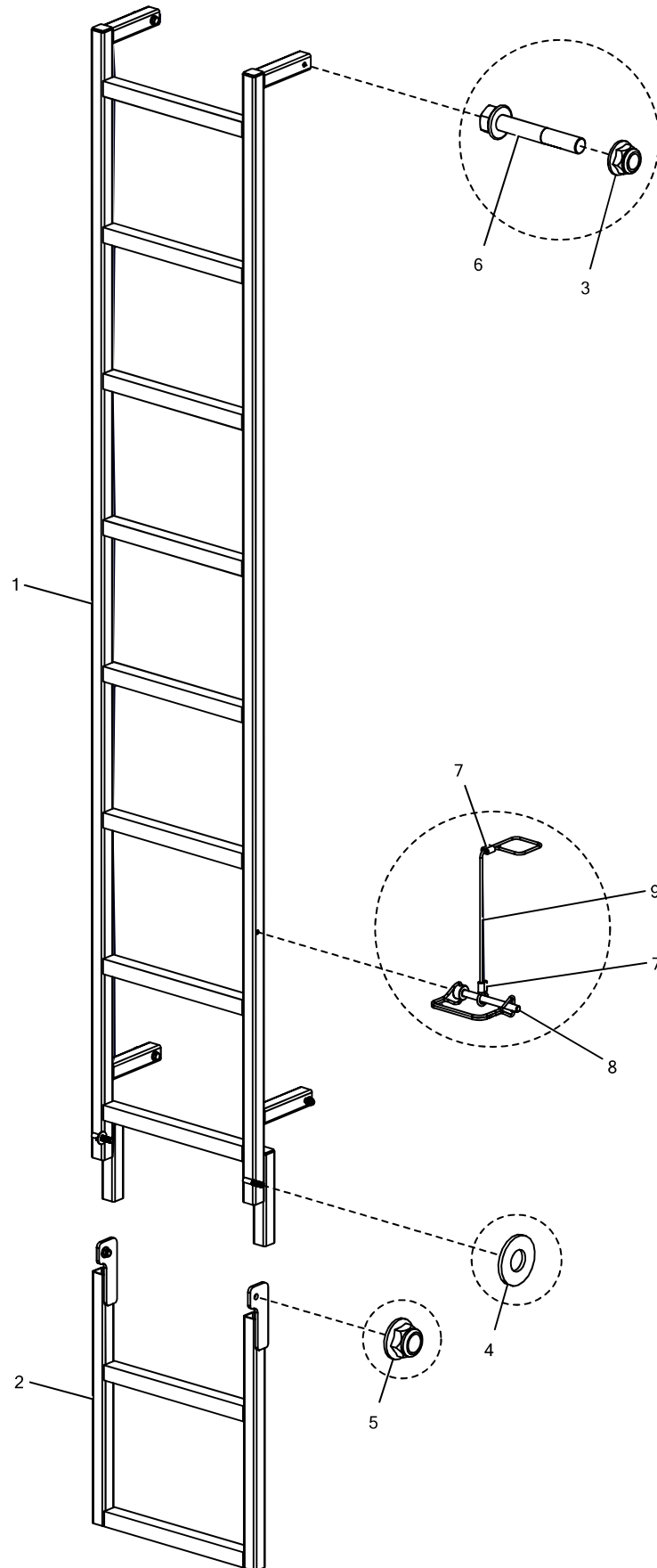
5.1.6 – C60 – WATER DISCHARGE



5.1.6 – C60 – WATER DISCHARGE

Item	Description	Part Number	Quantity	
			C60	C60E
1	VALVE	5456-102.30	1	1
2	VALVE	5456-101-004	1	1
3	BRACKET	2542-003-10	1	1
4	NIPPLE	5053-000.30	1	1
5	TEE	5000-130.30	1	1
6	ELBOW	5003-120-002	1	1
7	ELBOW	5003-130.30	1	1
8	CHECK VALVE	5077-440-000	1	1
9	BARB	5401-582	2	2
10	PUSHLOCK	5077-456-000	1	1
11	SCREW	5335-305	2	2
12	HOSE REEL	5401-094-000	1	1
13	BRACKET	2542-208-02	1	1
14	NOZZLE	5450-015-000	1	1
15	BARB	5401-582	1	1
16	FLANGE LOCK NUT	5307-314-000	4	4
17	ADAPTER	5401-001-003	1	1
18	VALVE	2581-061-01	1	1
19	VENT	5213-222	1	1
20	BARB	5401-422-000	1	1
21	DRAIN VALVE	5456-158-000	1	1
22	PUSHLOCK	5077-522	1	1
23	ELBOW	5004-160-002	1	1
24	REDUCER	5010-172-002	1	1
25	REDUCER	5010-172.01	1	1
26	PLUG	5005-111-001	1	1

5.2 – C60 – WATER TANK LADDER

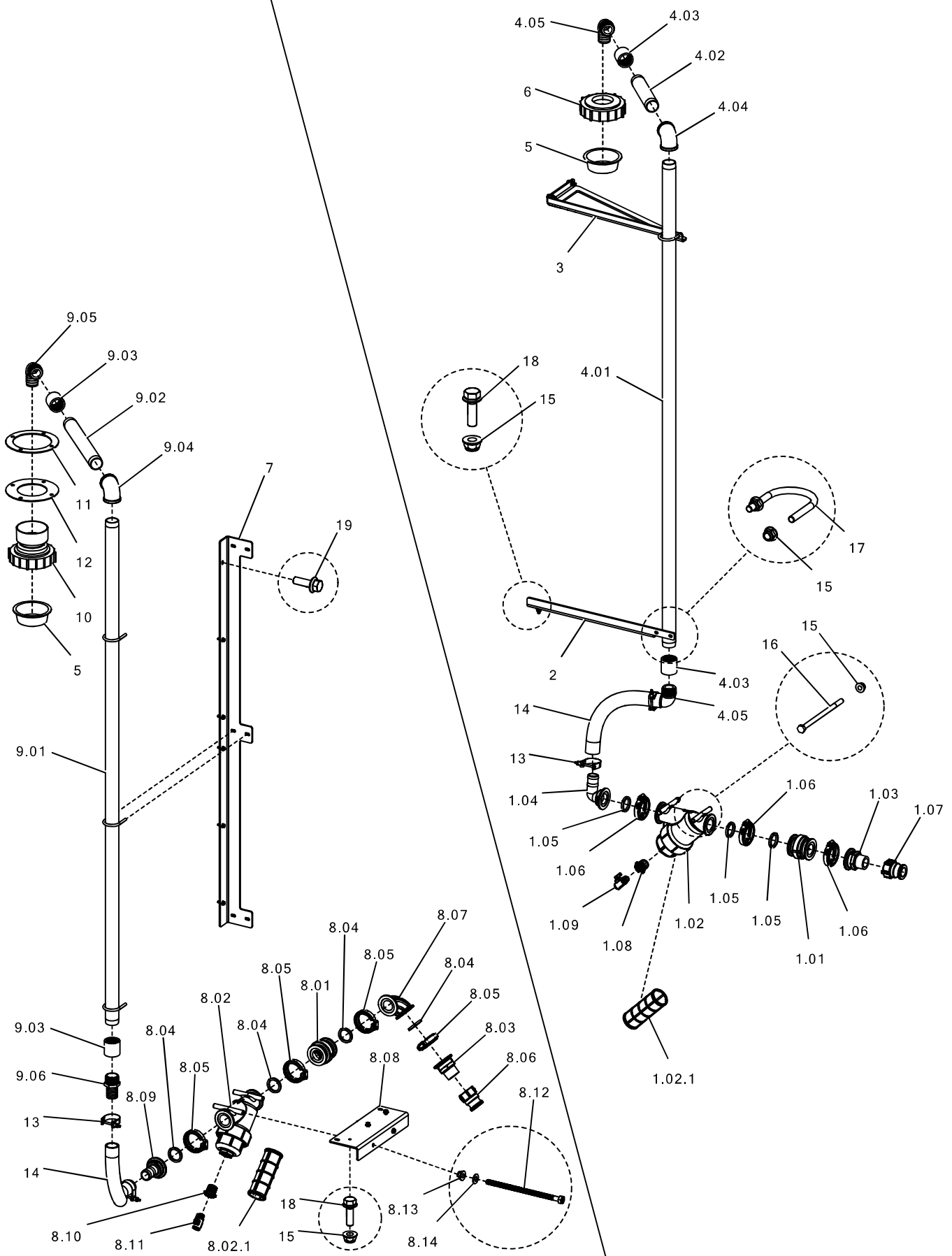


5.2 – C60 – WATER TANK LADDER

Item	Description	Part Number	Quantity	
			C60	C60E
1	LADDER			
	LADDER, FOR FLIP UP	2542-273-01	1	1
	LADDER, NO FLIP UP	2542-200-03	1	1
2	LADDER, FLIP UP	2542-272-01	1	1
3	FLANGE LOCK NUT	5307-118-000	4	4
4	WASHER	5310-200	2	2
5	FLANGE LOCK NUT	5307-216-000	2	2
6	FLANGE BOLT	5309-116-000	4	4
7	CABLE SLEEVE	5612-016	2	2
8	LOCK PIN	5377-656	1	1
9	CABLE	5610-016-01200	1	1

Install Kit		Quantity	
Description	Part Number	C60	C60E
*WATER TANK LADDER, WITH FLIP UP	2542-302-04	1	1
*WATER TANK LADDER, NO FLIP UP	2542-303-04	1	1
* water tank ladder attaches to insulated water tank only			

5.3 – C60 – WATER FILL PIPE WITH AIR GAP



5.3 – C60 – WATER FILL PIPE WITH AIR GAP

Item	Description	Part Number	Quantity	
			C60	C60E
1	WATER FILL ASSY	2542-402-01	1	1
1.01	CHECK VALVE	5456-227-000	1	1
1.02	STRAINER ASSY	5451-127-000	1	1
1.02.1	STRAINER	5451-127-001	1	1
1.03	ADAPTER	5016-100-001	1	1
1.04	BARB	5016-202-001	1	1
1.05	GASKET	5016-301-002	3	3
1.06	CLAMP	5016-300-002	3	3
1.07	ADAPTER	5401-098-000	1	1
1.08	REDUCER	5010-153.30	1	1
1.09	DRAIN VALVE	5456-101-004	1	1
2	MOUNT	2542-036-08	1	1
3	MOUNT	2542-035-08	1	1
4	PIPE ASSY	2542-137-00	1	1
4.01	PIPE	2449-013-00	1	1
4.02	PIPE	2449-014-00	1	1
4.03	COUPLING	5007-170-002	2	2
4.04	ELBOW	5001-170.10	1	1
4.05	BARB	5401-724	2	2
5	STRAINER	5457-904-002	2	2
6	CAP W/HOLE	2542-037-08	1	1

Item	Description	Part Number	Quantity	
			C60	C60E
7	BRACKET	2542-058-09	1	1
8	WATER FILL ASSY	2542-429-01	1	1
8.01	CHECK VALVE	5456-227-000	1	1
8.02	STRAINER ASSY	5451-127-000	1	1
8.02.1	STRAINER	5451-127-001	1	1
8.03	ADAPTER	5016-100-001	1	1
8.04	GASKET	5016-301-002	4	4
8.05	CLAMP	5016-300-002	4	4
8.06	ADAPTER	5401-098-000	1	1
8.07	ELBOW	5016-400-000	1	1
8.08	BRACKET	2542-057-09	1	1
8.09	BARB	5016-200-003	1	1
8.10	REDUCER	5010-153.30	1	1
8.11	DRAIN VALVE	5456-101-004	1	1
8.12	BOLT	5315-141-000	2	2
8.13	LOCK NUT	5307-118-000	2	2
8.14	WASHER	5311-100	2	2
9	PIPE ASSY	2542-164-00	1	1
9.01	PIPE	2449-006-00	1	1
9.02	PIPE	2449-017-00	1	1
9.03	COUPLING	5007-170-002	2	2
9.04	ELBOW	5001-170.10	1	1
9.05	BARB	5401-724	1	1
9.06	BARB	5401-424	1	1
10	CAP W/SPOUT	2542-430-01	1	1
11	RETAINER	2542-061-09	1	1
12	GASKET	2542-059-09	1	1
13	CLAMP	5370-530-002	4	4
14	HOSE	5400-242	3.0'	3.0'
15	FLANGE LOCK NUT	5307-118-000	19	19
16	BOLT	5315-138	2	2
17	UBOLT	5381-019	5	5
18	FLANGE BOLT	5309-108-000	7	7
19	FLANGE BOLT	5309-006-000	6	6

Install Kit		Quantity	
Description	Part Number	C60	C60E
WATER FILL PIPE WITH AIR GAP, STANDARD TANK	2542-345-02	1	1
WATER FILL PIPE WITH AIR GAP, INSULATED TANK	2542-314-03	1	1