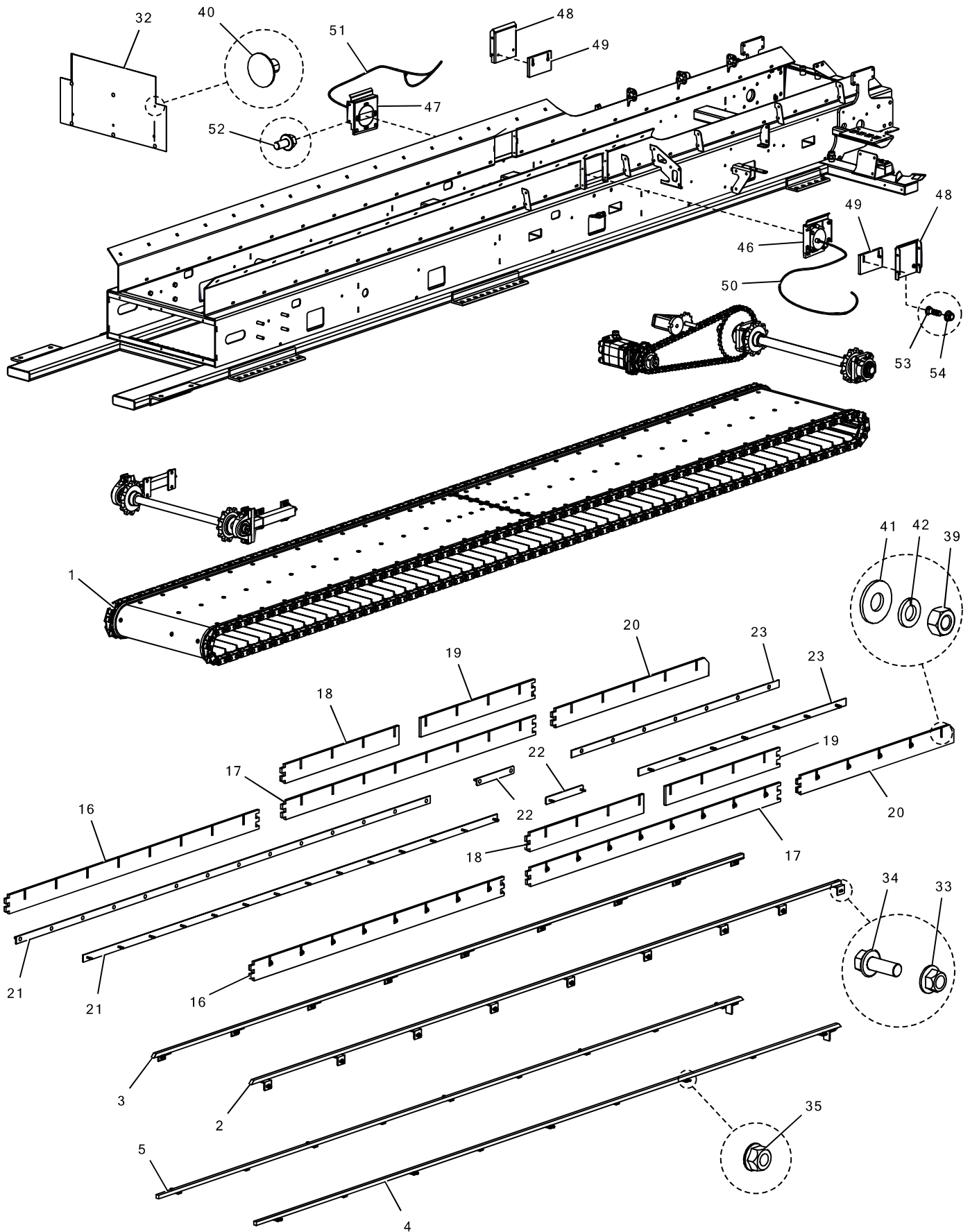
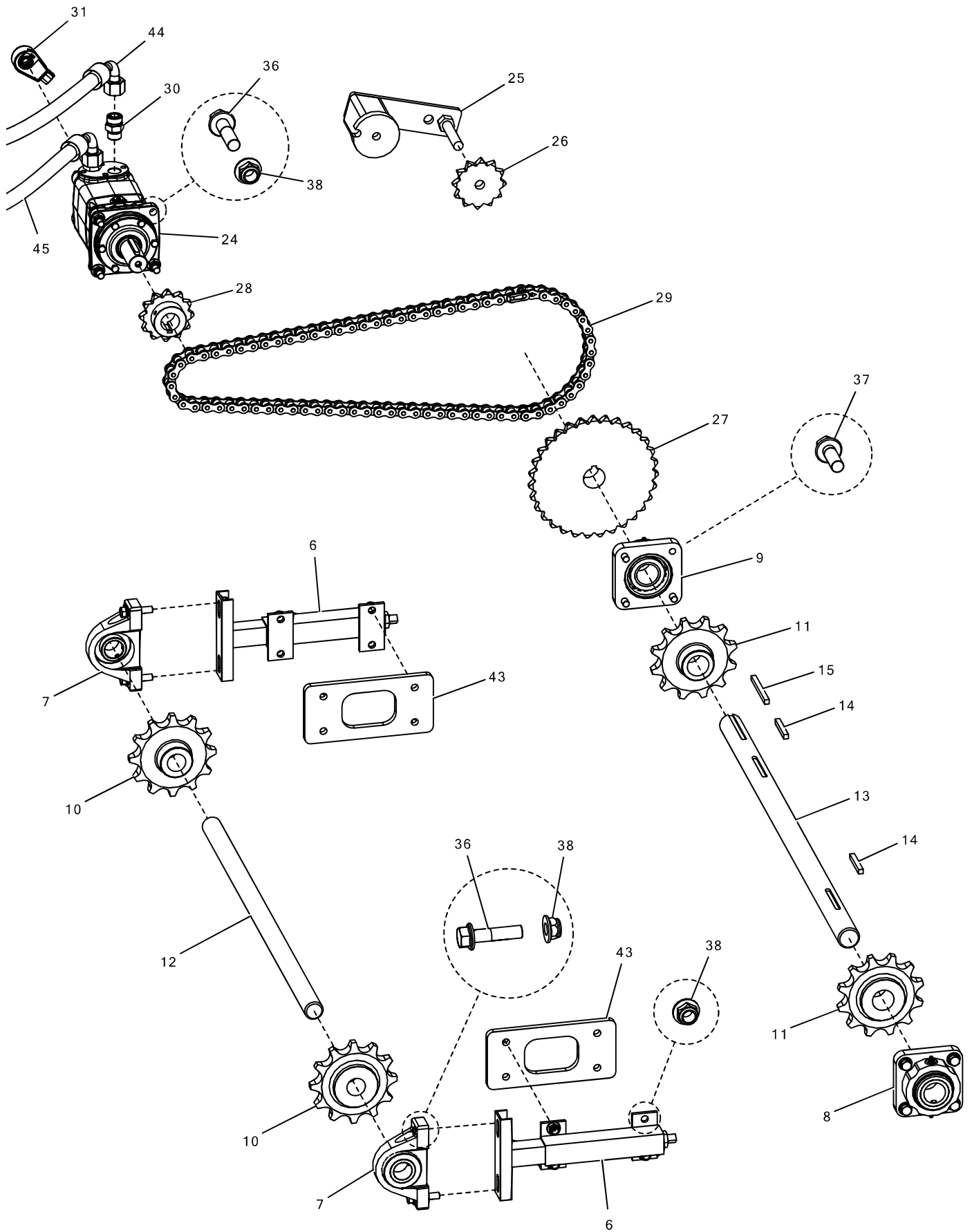


1.1 - C60 - CONVEYOR



1.1 – C60 – CONVEYOR



1.1 – C60 – CONVEYOR

Item	Description	Part Number	Quantity	
			C60	C60E
1	CHAIN & BELT			
	CHAIN & BELT	0370-118	1	-
	CHAIN & BELT	0370-128	-	1
2	CHAIN RAIL, UPR, LH SIDE			
	CHAIN RAIL, UPR, LH SIDE	0494-202	1	-
	CHAIN RAIL, UPR, LH SIDE	1068-201	-	1
3	CHAIN RAIL, UPR, RH SIDE			
	CHAIN RAIL, UPR, RH SIDE	0494-201	1	-
	CHAIN RAIL, UPR, RH SIDE	1068-202	-	1
4	CHAIN RAIL, LWR, LH SIDE			
	CHAIN RAIL, LWR, LH SIDE	2542-205-00	1	-
	CHAIN RAIL, LWR, LH SIDE	2542-241-01	-	1
5	CHAIN RAIL, LWR, RH SIDE			
	CHAIN RAIL, LWR, RH SIDE	2542-206-00	1	-
	CHAIN RAIL, LWR, RH SIDE	2542-242-01	-	1
6	TAKE-UP BEARING	5155-250-000	2	2
7	BEARING	5152-124	2	2
8	BEARING, LH SIDE	5151-129-001	1	1
9	BEARING, RH SIDE	5151-129-000	1	1
10	SPROCKET	5179-212A	2	2
11	SPROCKET	5179-212B	2	2
12	SHAFT	2542-071-09	1	1
13	SHAFT	2542-065-00	1	1
14	KEY STOCK	5375-004-00300	2	2
15	KEY STOCK	5375-004-00463	1	1
16	MATERIAL GUIDE, FRONT, 76"	0859-013-00	2	2
17	MATERIAL GUIDE, MID, 76"	0859-013-00	2	2
*18	MATERIAL GUIDE, MID SPLIT FRONT, 35"	0859-033-00	2	2
*19	MATERIAL GUIDE, MID SPLIT REAR, 34"	0859-036-00	2	2
20	MATERIAL GUIDE, REAR			
	MATERIAL GUIDE, REAR, 47"	0859-026-00	2	-
	MATERIAL GUIDE, REAR, 66"	0859-018-00	-	2
21	RETAINER, FRONT			
*	RETAINER, FRONT, 105"	2542-489-01	2	2
	RETAINER, FRONT, 124"	1767-012	2	2
*22	RETAINER, MID, 11"	2542-492-01	2	2
23	RETAINER, REAR			
	RETAINER, REAR, 62"	1767-013	2	-
	RETAINER, REAR, 80"	1767-019-00	-	2

Item	Description	Part Number	Quantity	
			C60	C60E
24	MOTOR			
	MOTOR, MECH CBIN	5233-701-000	1	1
	MOTOR, HYD CBIN	5233-700-000	1	1
25	TENSIONER	5813-004	1	1
26	SPROCKET	5176-812	1	1
27	SPROCKET	5176-231	1	1
28	SPROCKET	5176-212A	1	1
29	CHAIN	2430-001-00	1	1
30	CONNECTOR	5223-051-000	2	2
31	ENCODER	5508-202-000	1	1
32	COVER	2581-016-00	1	1
33	FLANGE LOCK NUT	5307-216-000	18	20
34	FLANGE BOLT	5309-208-000	18	20
35	FLANGE LOCK NUT	5307-020-000	10	12
36	FLANGE BOLT	5309-414-000	8	8
37	FLANGE BOLT	5309-412-000	8	8
38	FLANGE LOCK NUT	5307-413-000	16	16
39	NUT	5300-118-001	42	46
40	FASTENER	5532-801-000	6	6
41	WASHER	5310-100-004	42	46
42	LOCK WASHER	5305-100-001	42	46
43	SPACER	2581-045-01	2	2
44	HOSE, UPR TUBE -> MOTOR A			
	HOSE, UPR TUBE -> MOTOR A	2542-508-00	1	-
	HOSE, UPR TUBE -> MOTOR A	2542-559-00	-	1
45	HOSE, MOTOR B -> LWR TUBE			
	HOSE, MOTOR B -> LWR TUBE	2542-509-00	1	-
	HOSE, MOTOR B -> LWR TUBE	2542-560-00	-	1
46	MOISTURE SENSOR, LH	2542-447-01	1	1
47	MOISTURE SENSOR, RH	2542-448-01	1	1
48	MOISTURE SENSOR BLANK	2542-025-10	2	2
49	MATERIAL GUIDE	2542-022-10	2	2
50	WIRELOOM, LH	2552-566-00	1	1
51	WIRELOOM, RH	2552-566-01	1	1
52	FLANGE BOLT	5309-004-000	8	8
53	CARRIAGE BOLT	5325-108	4	4
54	FLANGE LOCK NUT	5307-118-000	4	4
* only used with moisture sensors				