



## I-SERIES



## EXCEPTIONAL DESIGN FOR EXCEPTIONAL CONCRETE

The I60 is one of the top modular volumetric concrete mixers on the market. Unlike other volumetric mixers which are hard welded, all of the I60's main components can be easily unbolted for replacement. Our units have been designed to the highest quality standards, yet are simple to use and maintain.

With over 75 combined years of volumetric design and operational experience, you can be confident in the I60's quality and service. This VMMB approved mixer meets AASHTO M-241 and ASTM C685 standards when operated in accordance with ACI 304.6R.

## CUSTOMER REQUIREMENTS

Carrying Capacity (yd <sup>3</sup> /m <sup>3</sup> )	8-12 / 6.1-9.2
Production Rate (yd <sup>3</sup> per hr / m <sup>3</sup> per hr)	60-90 / 45-68
Aggregate Bin (ft <sup>3</sup> /m <sup>3</sup> )	272-408 / 7.7-11.55
Cement Bin (ft <sup>3</sup> /m <sup>3</sup> )	115 / 3.26
Mix Auger (in/mm)	12" / 304 diameter
Air System	4 Pneumatic vibrators for accurate flow
Aggregate Belt (in/mm)	24" / 610 for multiple agg size capabilities
Available Water Tank (gal/L)	525 / 1987

[www.cementtech.com](http://www.cementtech.com)

MOBILE CONCRETE DISPENSER

## I60/I90

### KEY FEATURES

- Modular bin design
- 525 gallon water tank
- 50° agg bin ensures consistent material flow with less maintenance
- Open design = Easy inspection & maintenance
- Variable speed cement metering

### STANDARD PACKAGE

- Exclusive "IRON MAN" lower bearing for extended life
- View windows to easily see cement levels
- Open conveyor allows you to easily see your aggregate prior to mixing
- User friendly control panel



Improved design provides higher quality concrete





## KEY APPLICATIONS



General Concrete



Precast



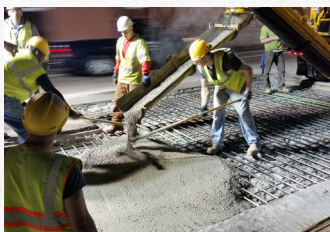
Flowable Fill



Pervious



Rapid Set



Overlay Concrete

## POTENTIAL OPTIONS



Ticket Printer



Hydraulic Chute Lift



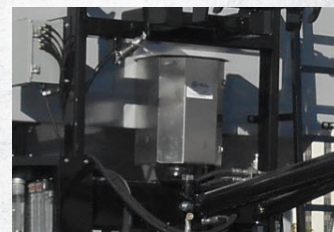
Cordless Remote



Pneumatic Fill



Flowable Fill



Fiber Chopper

## ABOUT CEMENT TECH

Cemen Tech believes that people, businesses, and communities around the world should have the infrastructure to access clean water, transport goods and services, and reliable housing.

Our products provide the foundation and stability to meet the needs of a growing world in an environmentally conscious way. We supply the world's best concrete one cubic yard at a time.



### MEMBER OF:



### Cemen Tech Inc.

1700 N. 14th Street,  
Indianola, Iowa 50125

Office: 800.247.2464

CTISalesInfo@cementech.com  
[www.CemenTech.com](http://www.CemenTech.com)